



**DENTAL LAB  
FURNITURE.**

**AL-YARMOUK MED- LAB FURNITURE**

# THE MAIN POINTS



Photos

Work bench

Fume hood

Plaster room

Raw materials  
coating process

Construction of base cabinets

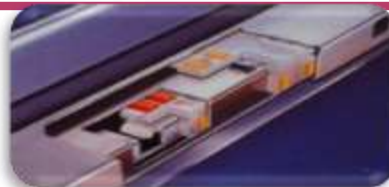
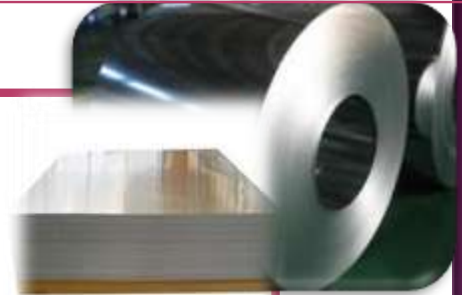
Wall cabinets

Hinge system

Drawers runner System

Quality

Contact us



**AL-YARMOUK® pay attention to the details**

# SAMPLES OF PICTURES



[Back to main](#)







2011

























# WORK BENCHES

- ◉ Work benches are arranged for the fitting up of the wide range of accessories available.
- ◉ The standard version includes:
  - Retractable air gun
  - power sockets & lamp
  - Fuse and housing for micro motor with power socket
  - Gas tap & peg wih glass shield
  - Stainless steel work plate



Back to main

**AL-YARMOUK ® pay attention to the details**

# FUME HOOD

## IN CASTING ROOM

- ◉ The standard version of each fume hood includes:
  - Inox Aisi 304 work top
  - Special glass with vertical sliding closing
  - Extraction system with motor
  - Internal lighting and power sokets
- ◉ Option:
  - 3 stagers carbon fume filter
  - Timer for coupling oven extraction system
  - Out-fits for special ovens



[Back to main](#)

**AL-YARMOUK ® pay attention to the details**

# PLASTER ROOM

- ◉ The standard version for plaster furniture includes:
  - Air gun
  - Solid surface work top
  - Stainless steel hole for waste
  - Drawers with telescopic runners
- ◉ Optional:
  - Plaster containers
  - plaster trap
  - INOX AISI 304 work top

[Back to main](#)



**AL-YARMOUK ® pay attention to the details**

# RAW MATERIALS

## GALVANIZED STEEL SHEET

- ❑ All cabinets made of 1.00 - 1.25 mm thickness Galvanized Steel sheet. according to German standard DIN 1541 .
- ❑ Galvanized steel has gone through a chemical process to keep it from corroding. The steel gets coated in layers of zinc to avoid rust.



# THE PRE-TREATMENT & COATING PROCESS

- ❑ Painting with Epoxy & polyesters electrostatic powder coating. With RAL Color .
- ❑ Easy to clean , resist to common disinfectants substance and chemicals .
- ❑ For galvanized steel surfaces the chromating processes as described in the German standard DIN 50939 have been state of the art for many years. Iron and steel surfaces are still phosphated prior to coating.



**AL-YARMOUK ® pay attention to the details**

# CABINETS BODIES

- ❑ Cabinets bodies are self-supporting , designed for acoustic damping and thermal insulation .
- ❑ Made as bent steel sheet structures from one integral part. without welding and without connections or joints. To added durability and to avoid the weaknesses at the joints . In order to be easy cleaning and sterilization and to make sure the arrival of special treatment for the entire paint surface
- ❑ Sides made of double wall steel sheet each at the left and right
- ❑ The bodies are provided with 4 connection holes 2 at the right and 2 at the left lateral walls to screw the cabinets at the place of installation.



**AL-YARMOUK ® pay attention to the details**

# DRAWERS BODY

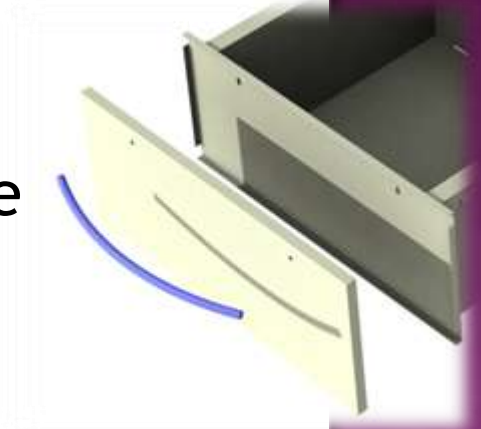
- ❑ Body of Drawers are made of steel sheet .
- ❑ Bottom and sides fabricated from bent sheet from one integral part.
- ❑ Drawers front and sides with double wall .



**AL-YARMOUK ® pay attention to the details**

# DOORS AND DRAWERS FACES

- ❑ made from double walls, angular.
- ❑ All drawers are made in zinc-chromate with high-quality Painting with Epoxy electrostatic powder coating
- ❑ Smooth , hygienically perfect, easy to clean surfaces
- ❑ Provided with steel Handles . Length is 20 or 32 Cm. to be easy for using. painted with Epoxy electrostatic with any required color of RAL



**AL-YARMOUK ® pay attention to the details**

# STANDARDIZATION

- ❑ Effective modular system that combined Flexibility in planning with exceptional functionality and quality to accept changing doors and drawers with different sizes at any time.



← Back to main

**AL-YARMOUK ® pay attention to the details**

# WALL CABINETS

- ❑ made of sheet metal as described above cabinet body description
- ❑ Sides made of double wall steel sheet each at the left and right
- ❑ Open cabinet or different with hinged steel doors or glazed steel door and glass or safety glass .
- ❑ hanging by BLUM hanging brackets withstand high loads and are exceptionally safe . This kind of reliability is very important for heavily loaded cabinets .



Back to main

**AL-YARMOUK ® pay attention to the details**

# HINGE SYSTEM

- ❑ Made in Austria
- ❑ Metal hinge, nickel plated  
110 degree opening angle  
With integrated BLUMOTION
- ❑ free door to cabinet assembly and removal without any screw .
- ❑ The new BLUMOTION closes cabinet door, silently and effortlessly, even when closed with force.
- ❑ BLUMOTION provides perfect motion, bringing comfort to all.
- ❑ The adaptive system adjusts itself to the closing speed and the weight of the door
- ❑ Its integrated overload safety feature due to improper use.



**AL-YARMOUK ® pay attention to the details**

# DRAWERS RUNNER SYSTEM

- ❑ Full extension enable optimal storage space
- ❑ Quiet movement and Self -closing
- ❑ Slaw motion (Reduces the forces involved in closing)
- ❑ Durable and robust (to support the heaviest load)
- ❑ Ease of use and precise alignment



Back to main

**AL-YARMOUK® pay attention to the details**

# WHERE CAN YOU FIND ALL OF THESE FEATURES ?

---

AL-YARMOUK® drawer runner system

Made in Austria

TANDEM plus BLUMOTION

Unsurpassed running action using the TANDEM runner principle

Silent and effortless closing action thanks to BLUMOTION

Can be combined with TIP-ON ,the mechanical opening and SERVO-DRIVE , the electrical opening support systems

As shown below

**AL-YARMOUK® pay attention to the details**



# FULL EXTENSION

- ❑ Our full extensions TANDEM plus runner enable optimal storage space utilization and because they improve ergonomic workflows
- ❑ Full extensions offer many advantages  
Doctor and his assistance spend a long time in his clinic using Cabinets so it should be a really comfortable place. Therefore, when planning your new clinic make sure that pull-outs and drawers can be fully extended out of the cabinet.
- ❑ Full extensions have the advantage in that they allow you to see and access items all the way at the back in contrast to single extensions. This provides you with a complete view of all items in the pull-out making them easily accessible.
- ❑ that guarantees comfort because of its high functionality.

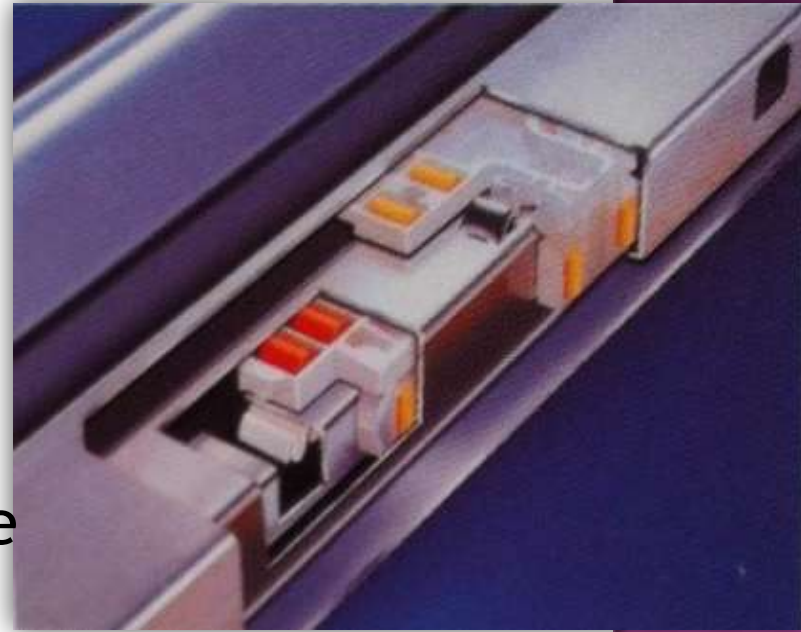


Back Runner

**AL-YARMOUK ® pay attention to the details**

# QUIET MOVEMENT AND SELF -CLOSING

- ❑ Low -friction cylindrical nylon roller runners are basis for the unparalleled TANDEM smooth running action for the lifetime
- ❑ Self-closing feature to ensure the drawer completely closing and It is also insure that the drawer will not open when move the cabinet. And it is equipped with safety stop system



Back Runner

**AL-YARMOUK ® pay attention to the details**

# SLAW MOTION

- ❑ Adaptive system - more than just dampening
- ❑ This next generation of BLUMOTION reduces the forces involved in closing drawers and pull-outs to provide a quiet and easy closing movement .
- ❑ This unique effect is achieved by a diaphragm within the cylinder that reacts to the closing force that is used . Whether the pull-out is heavily laden or empty , pushed gently or with perfect movement every time .

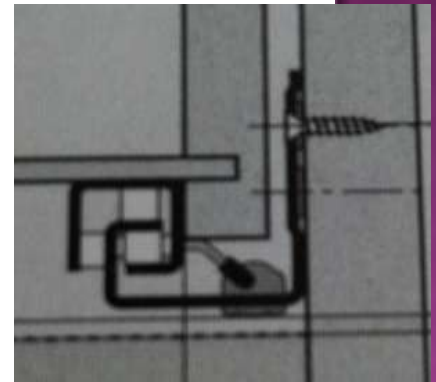
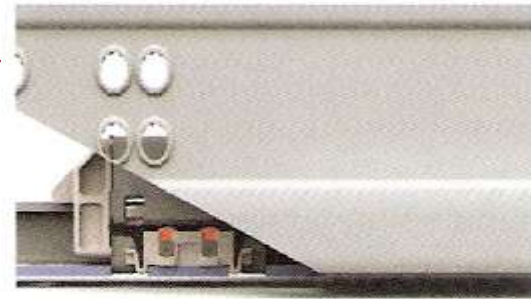


Back Runner

**AL-YARMOUK ® pay attention to the details**

# DURABLE AND ROBUST

- ❑ Strong enough to support the heaviest load. By unique innovation of TANDEM plus .
- ❑ The bridge block design supports the runner system over the entire length of the opening and closing action. It provides a secure and controlled closing action even when fully loaded and it provides a precise gap capability.
- ❑ TANDEM plus . Has an overall load carrying capacity of 30 kg.



Back Runner

**AL-YARMOUK ® pay attention to the details**

# EASE OF USE

## AND PRECISE ALIGNMENT

Using the TANDEM hook & peg feature , drawer assembly is just a matter of the hand .

This gives you the advantage of fast , simple & accurate fitting.

Tool free height adjustment of up to 2.5 mm . This provides a simple and precise way to adjust the front spacing between drawers front.



Back Runner

**AL-YARMOUK®** pay attention to the details

# WORK TOP SURFACES

- ❑ CORIAN® Soled surface
- ❑ Phenolic risen(trespa)
- ❑ Stainless steel
- ❑ High pressure laminates



**AL-YARMOUK® pay attention to the details**

# WORK TOP SURFACES

- **ACRYLIC RESIN**

- Use: Areas where joint free tops are essential. Clean room workstations.
- Advantages: seamless work tops, large range of colors.
- Disadvantages: low resistance to scratch, medium chemical resistance.



- **PHENOLIC RESIN -COMPACT LAMINATE**

- Use: wet rooms, benches with high impact, heavy use applications, industrial & scientific labs.
- Advantages: resistance to moisture, chemicals, impact, fire and heat.
- Disadvantages: relatively expensive, low coating thickness.



**AL-YARMOUK ® pay attention to the details**

# WORK TOP SURFACES

## ◉ MELAMINE LAMINATED PLYWOOD

- Use: laboratory benches, mobile tables, instrument benches.
- Advantages: flat, economical, choice of colors & widely available.
- Disadvantages: not suitable for wet areas, low chemical resistance.



## STAINLESS STEEL

- Use: Most type of laboratory workstations, fume cupboards, demonstration areas.
- Advantages: Resistance to moisture, chemical and temperature, easy of cleaning.
- Disadvantages: relatively expensive, sensitive to halogen, high electric conductivity.



 **AL-YARMOUK ® pay attention to the details**

# ACRYLIC RESIN WORK TOP



- ❑ CORIAN ® WORKTOPS .
- ❑ Original CORIAN from DU Pont the benefits of natural stone with the impact resistance and pore-free characteristics of acrylic.
- ❑ chemicals and UV radiation resistant . Heat resistant and environmentally compatible . Easy care properties , long life and easy to repair.
- ❑ 12mm thickness



Colors of Corian®

# CORIAN® SINKS

---

- ❑ **Corian ® Seamless Integral Sinks**
- ❑ can be seamlessly joined beneath a countertop in a matching or contrasting colour of Corian®, creating a homogenous design.
- ❑ Non-porous, resistant to stain- and moisture-resistant,
- ❑ sinks in Corian® are hygienic and easy to clean, and will look like new for years to come. If minor cuts or scratches do occur, these are easy to remove.
- ❑ Rounded corners to prevent penetration of dirt or moisture.



[Back to main](#)

**AL-YARMOUK ® pay attention to the**

# NATIONAL INDUSTRY INTERNATIONAL QUALITY



**Made in K. S. A & A.R.E.**

conforming to international specifications  
utilizing certain components, accessories  
and options imported from the best  
factories in Europe



**AL-YARMOUK® has been granted  
ISO 9001 :2008 certificate in the  
system field of Quality management  
applicable to manufacturing of Med.&  
Lab. Furniture**



Back to main

**AL-YARMOUK® pay attention to the details**


# AL-YARMOUK K.S.A

## MED-LAB FURNITURE



Name of Company	AL-YARMOUK modern factory for Med.& lab. furniture		
	Member of AL-YARMOUK group		
General manager	AHMAD ABD EL HAMID ABD ELGAWAD		
Mobile number	+966 54 217 84 20		
Email & web site	<a href="mailto:Yarmomed@gmail.com">Yarmomed@gmail.com</a> <a href="http://www.al-yarmouk.com">www.al-yarmouk.com</a>		
Tel. & Fax	(+966) (1) 412 88 11 - 412 88 22		
P.O.Box	27617 - Riyadh 11427		
Show room	K. S. A. Riyadh Dabab St. Near of Riyadh chamber of commerce		
Commercial register	1010241948	DATE 23/ 12/ 1428	Riyadh
Industrial license	101031026262	industrial investment License 1.1 million SR	
Main business	Production , installation and maintenance of Medical ,dental and Lab furniture or Casework		

Back to main



Back to main

# AL-YARMOUK A.R.E

## MED-LAB FURNITURE



Name of Company	AL-YARMOUK Arch.& Decoration
	Member of AL-YARMOUK group
General manager	AHMAD ABD EL HAMID ABD ELGAWAD
Mobile number	+20100 217 84 20
Email & web site	<a href="mailto:Yarmomed@gmail.com">Yarmomed@gmail.com</a> <a href="mailto:yarmodent@gmail.com">yarmodent@gmail.com</a>
Tel. & Fax	(+20) (2) 33833338- 33821700
P.O.Box	96- haram 12556
Show room	A.R.E. Cairo behind 187 pyramids St.
Commercial register	3184      DATE 1999 Cairo
Main business	Production , installation and maintenance of Medical ,dental and Lab furniture or Casework

Back to main